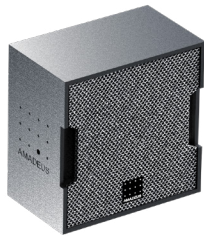


C 3

TECHNICAL SPECIFICATIONS





C 3
Engineered by Amadeus
Made in Paris, France
100 W RMS
100 W
CE mark

AMADEUS

AMADEUS

AMADEUS



ACOUSTICAL SPECIFICATIONS

Amplitude linearity (± 3 dB) (*)	95 - 20 000 Hz	(*) with #HPF 80 Preset
Operating frequency range (- 6dB)	84 - 20 000 Hz	
Cut off frequencies (- 10dB)	74 - 20 000 Hz	
Number of ways	2	
Sensitivity	86 dB (4 Ω) or 82 dB (8 Ω)	
Maximum SPL (*)	100 dB	(*) Peak level at 1-meter under free field conditions using 12 dB crest factor pink noise
Horizontal coverage	100°	
Vertical coverage	100°	

TECHNICAL SPECIFICATIONS

Nominal impedance	4 Ω or 8 Ω	
AES power handling	30 W	
Program power handling	60 W	
Peak power handling	120 W	
Transducer (LF)	1 x 3.5" driver with neodymium magnet	
Transducer (HF)	1 x 0.625" neodymium dome tweeter (*)	(*) Voice Coil Diameter
Enclosure type	Sealed	
Crossover type	Passive	

PHYSICAL SPECIFICATIONS

Height	5.98 in (152 mm)
Width	5.98 in (152 mm)
Depth	4.25 in (108 mm)
Weight	3.97 lbs (1.8 kg)
Connectors	1 x speakON NL4MP
Rigging	2 x M5 threaded inserts for optional U-Bracket

REFERENCES

C 3	2-way passive point-source horn speaker with 100° conical dispersion (1 x 3.5" LF ; 1 x 0.625" HF)
LYRE C 3	U-Bracket for C 3
FA2C3	Fly Case for two Amadeus C 3
FA4C3	Fly Case for four Amadeus C 3
9005	Jet Black finish for cabinet, based on RAL 9005 color
9010	Pure White finish for cabinet, based on RAL 9010 color
1013	Oyster White finish for cabinet, based on RAL 1013 color
7040	Window Grey finish for cabinet, based on RAL 7040 color
7030	Stone Grey finish for cabinet, based on RAL 7030 color
5011	Steel Blue finish for cabinet, based on RAL 5011 color
9005	Jet Black color for Airtex [®] acoustical fabric, based on RAL 9005 color
9006	White Aluminium color for Airtex [®] acoustical fabric, based on RAL 9006 color
9010	Pure White color for Airtex [®] acoustical fabric, based on RAL 9010 color
1035	Pearl Beige color for Airtex [®] acoustical fabric, based on RAL 1035 color
1036	Pearl Gold color for Airtex [®] acoustical fabric, based on RAL 1036 color



STANDARD COLOR CODES

Amadeus systems offer a standard 'Jet Black' finish, based on RAL 9005 color. The following codes allow you to select separately the colors associated with the different external elements that Amadeus systems are composed of.

REFERENCE / **** 1 / **** 2

**** 1 RAL COLOR CODES FOR CABINETS AND MECHANICAL ELEMENTS

**** 2 RAL COLOR CODE FOR AIRTEX[®] ACOUSTICAL FABRIC

For example, a two-color PMX 5 MKII system with 'Jet Black' cabinet (RAL 9005) and 'White Aluminium' Airtex[®] fabric in front of the protection grid (RAL 9006) gets the code PMX5MKII/9005/9006. Another example, a single-color DIVA XS system, made with a 'Pure White' (RAL 9010) cabinet and mechanical elements and a 'Pure White' (RAL 9010) acoustical fabric Airtex[®] covering the protection grid gets the code DIVAXS/9010/9010.

Please contact us if you want to order any specific color.

HIGHLY RESISTANT FINISH (HRF)

Amadeus recently invested in a new painting area featuring new painting machines able to produce a high-resistance resin-based finish, making the speakers highly resistant to scratches, shocks and water projections.

This new optional finish, increasing the systems' durability as well as the degree of protection provided by enclosures against intrusion, dust, accidental contact, and water up to IP55 (EN 60 529) is now available available on-demand.

Please contact us if you want to order any specific finish.

ACCESSORIES TO MEET YOUR NEEDS

Accessories are often the forgotten detail. They are, however, a vital component in a complex speaker setup.

To compliment our core product offering, we also provide an extensive range of accessories.

The selection of accessories includes a huge number of mounting and connecting accessories, available to accommodate any configuration of installation.

The key to our success is to remain flexible. We have a unique manufacturing programme which allows us to efficiently produce anything from small batches to an automated production process for large scale manufacturing.

Please contact us if you want to order any specific accessory.

